

HALL 7

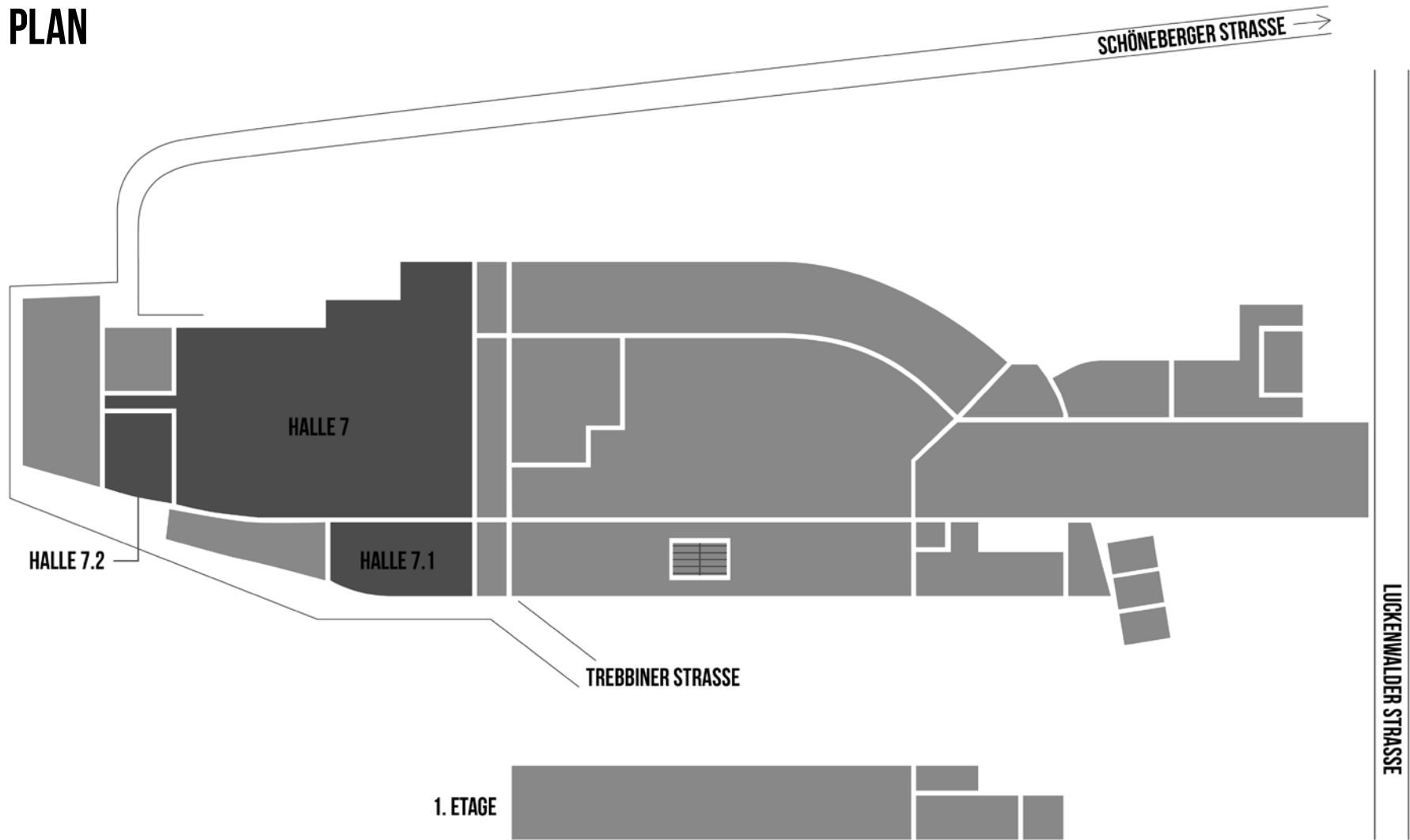
STATION BERLIN | EIGHT HALLS. 23,000 SQUARE METRES OF SPACE. INFINITE POSSIBILITIES.

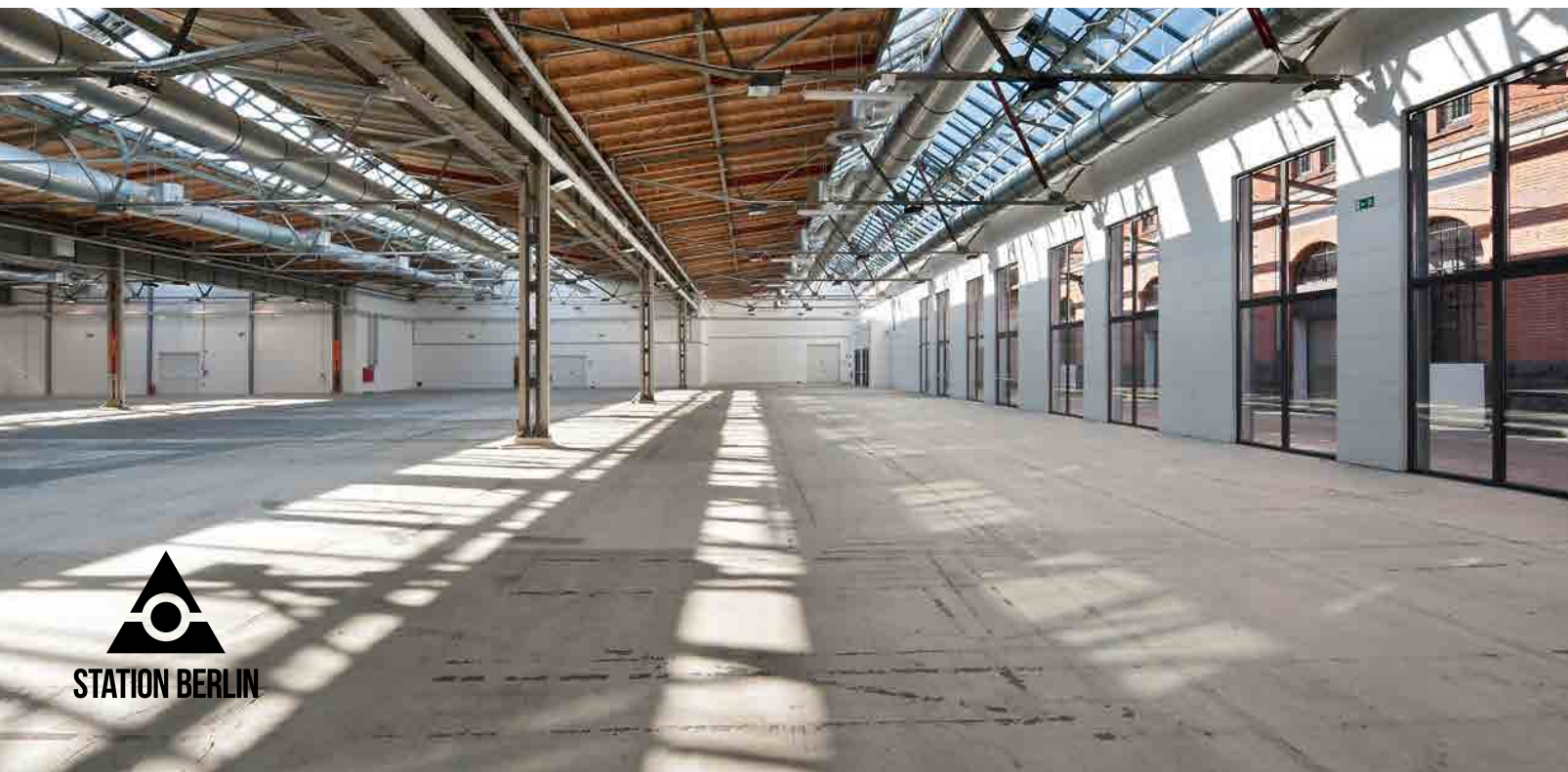


STATION BERLIN

HALL 7

GROUND PLAN





HALL 7

INFO

Following extensive modifications, STATION-Berlin is proud to unveil Hall 7, a total of 4,150m² of interconnected spaces at the heart of Berlin.

The track beds and platforms were dismantled in order to add an additional 2,000m².



HALL 7

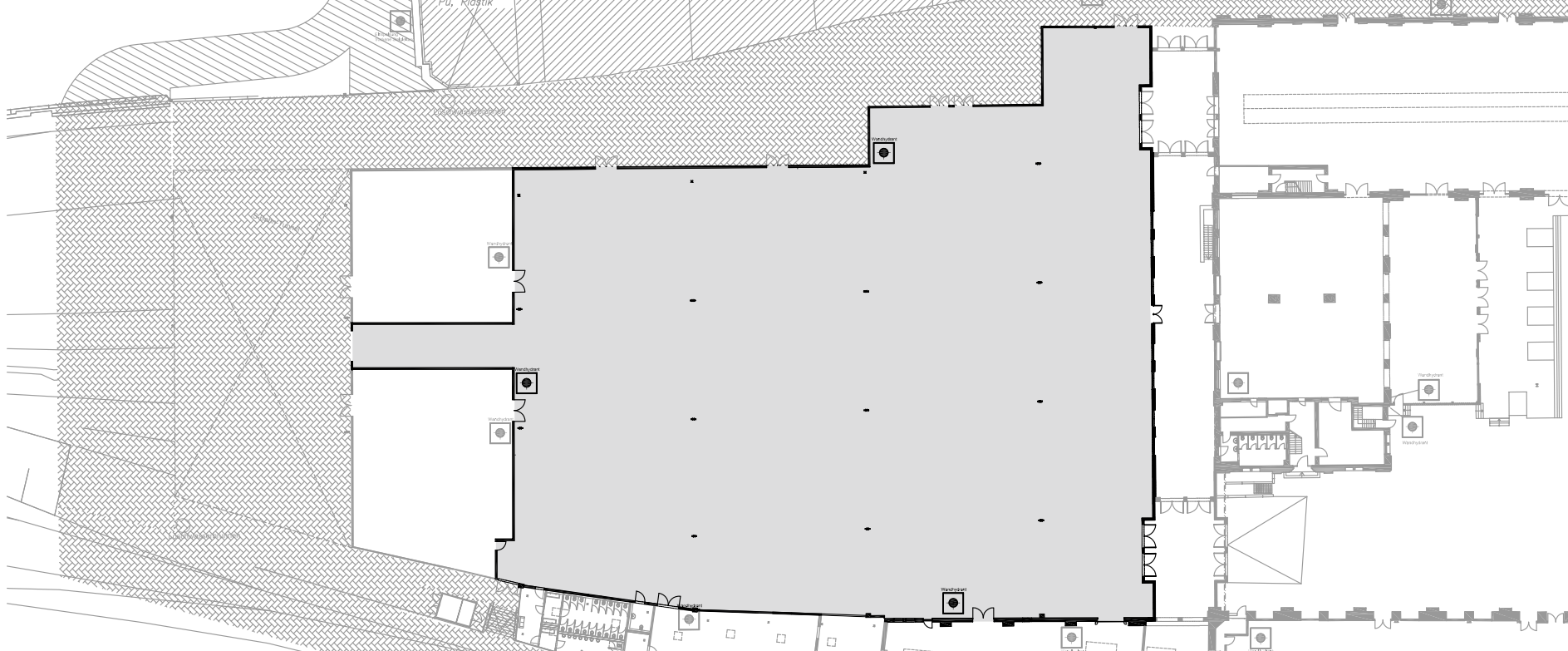
USE

Abundant in size, infused with natural light and efficient in every regard; after its expansion in 2011, Hall 7 is the most ultramodern hall at STATION-Berlin.

There are access points on multiple sides; it has an advantageous floor plan and efficient HVAC system, likewise installed in 2011.



STATION BERLIN



HALL 7

FACTS

Floor space	4,200m ²
Dimensions	74 x 68m
Clearance height	9.60m
Crossbeam height	5.50m
Level	Ground Floor

SEATING

Theatre	3,000 Seats
Gala	2,100 Seats
Banquet	2,300 Seats
Without seating	4,200 Standing

OTHER

Power	Yes
Water	Yes
LAN/WiFi	Yes/Yes
Truck/car access (via ramp)	Yes/Yes
Heating/Air Conditioning	Yes/No
Blackout	Optional