

# PRODUCTION OFFICES

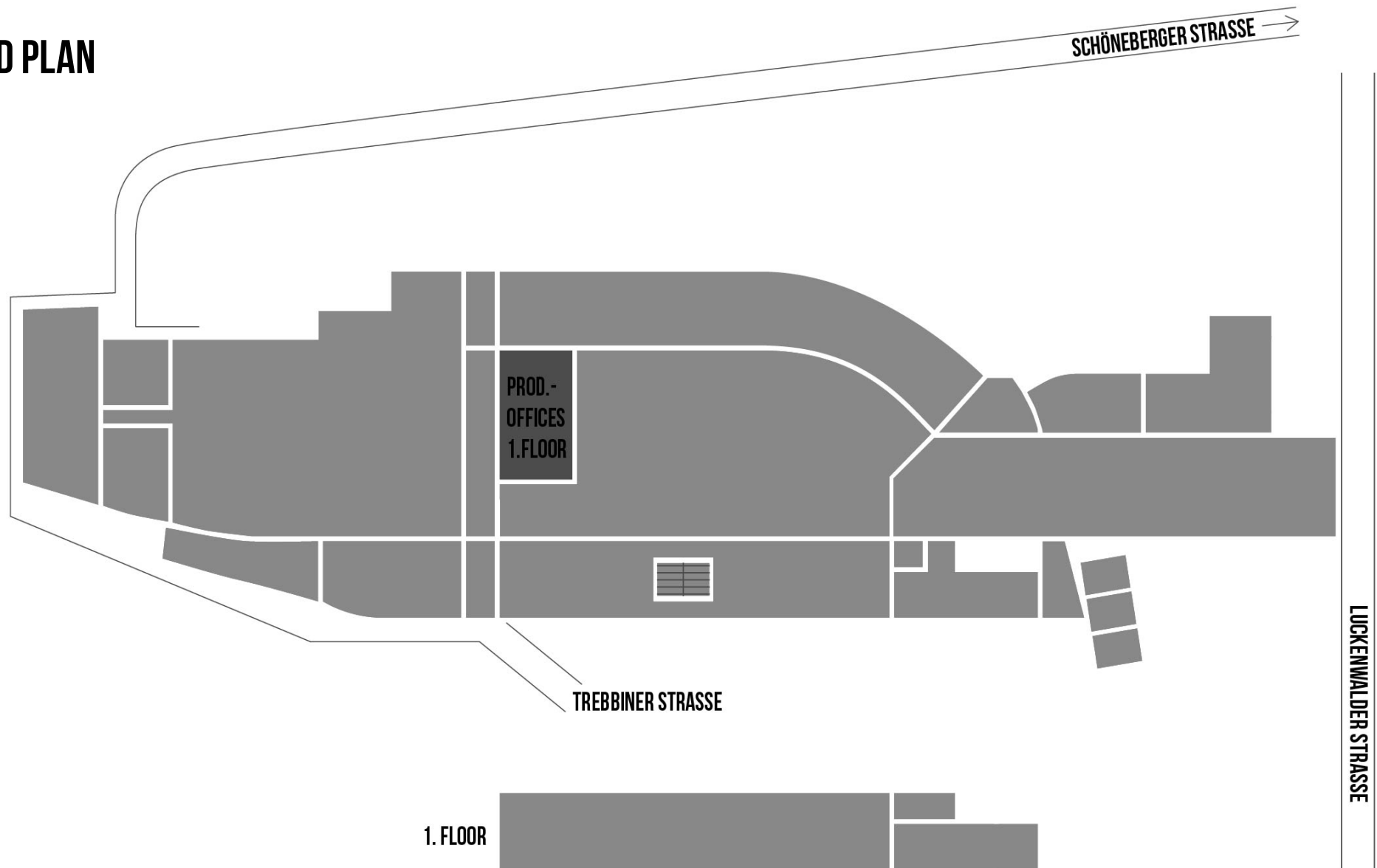
STATION-BERLIN | EIGHT HALLS, 23.000 SQUARE METRES OF SPACE. INFINITE POSSIBILITIES.



STATION BERLIN

# PRODUCTION OFFICES

## GROUND PLAN



STATION BERLIN



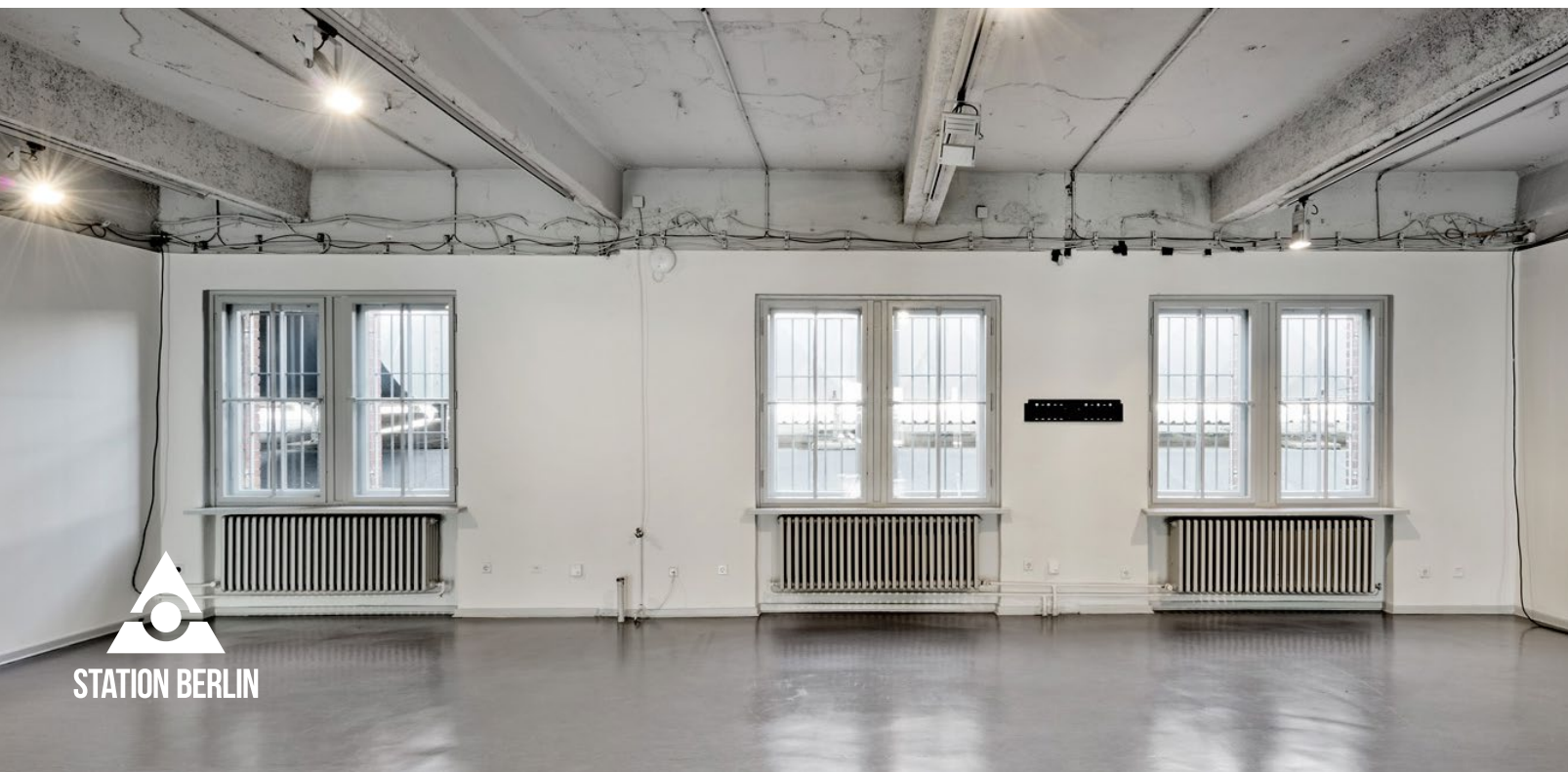
# PRODUCTION OFFICES

## INFO

On the upper floor of Hall 2, there are five production offices, each with an area of around 30 square metres, which can be rented in addition to the adjacent halls.

The open area between the production offices offers a further usable area of around 210 square metres.

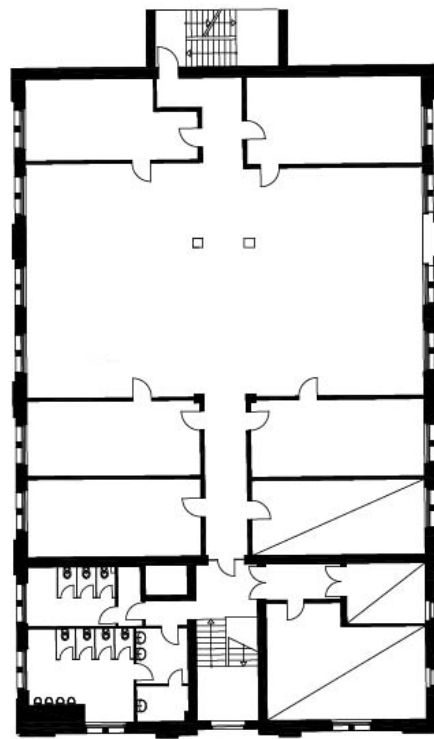




## PRODUCTION OFFICES

### USE

The spacious, lockable offices are particularly suitable as crew areas and artists' dressing rooms, but can also be used for smaller meetings, workshops or as quiet relaxation rooms during production.



# PRODUCTION OFFICES

## FACTS

Quantity	5
Floor space	each 30 sqm
Total space	approx. 360 sqm
Level	First Floor
Barrier-free access	No
Disabled toilet	No

## OTHER

Power	Yes
Water	Yes
LAN/WiFi	Yes/Yes
Truck/car access (via ramp)	No/No
Heating/Cooling	Yes/No
Blackout	Optional