

HALL 2

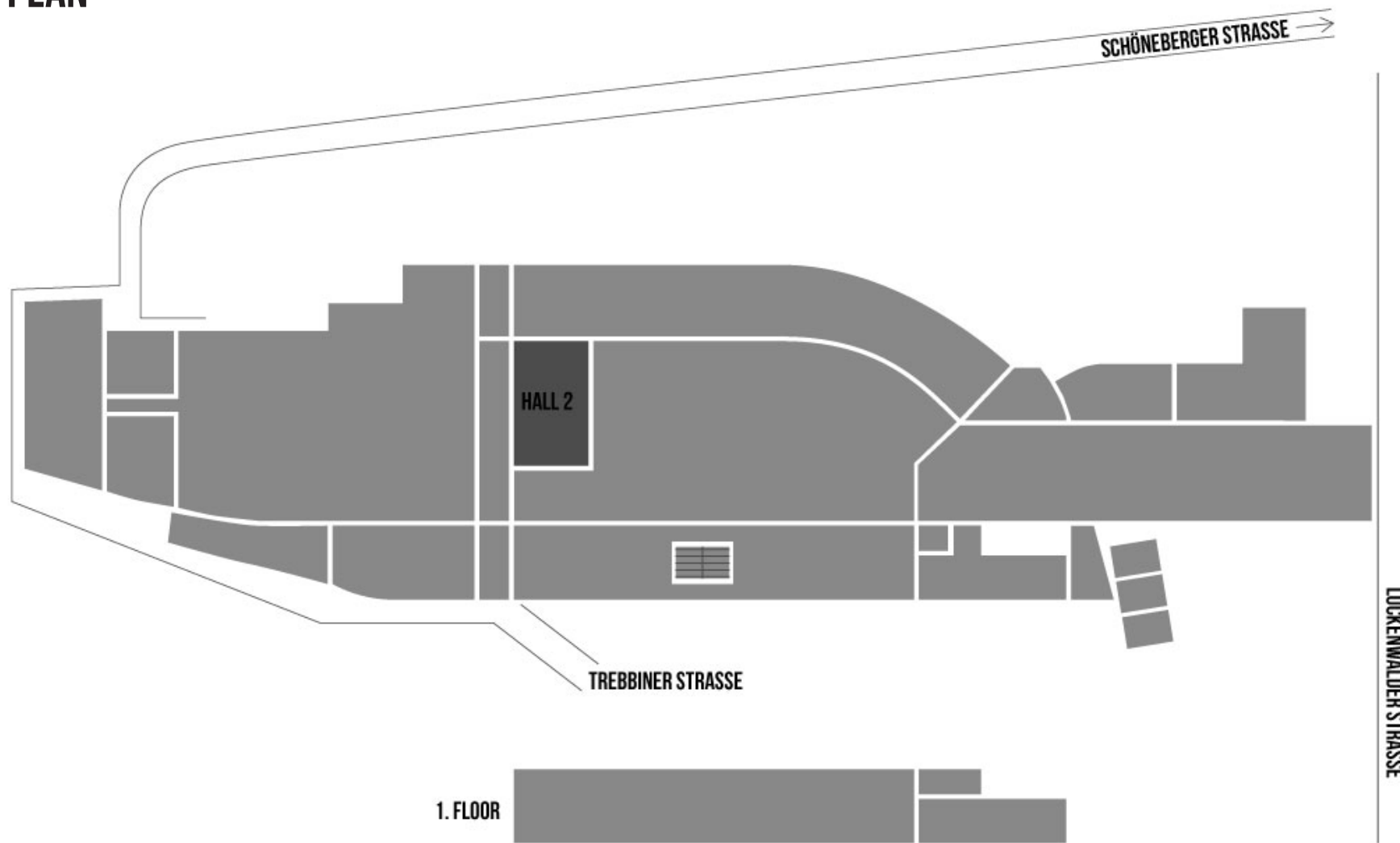
STATION-BERLIN | EIGHTHALLS, 23.000 SQUARE METRES OF SPACE. INFINITE POSSIBILITIES.



STATION BERLIN

HALL 2

GROUND PLAN





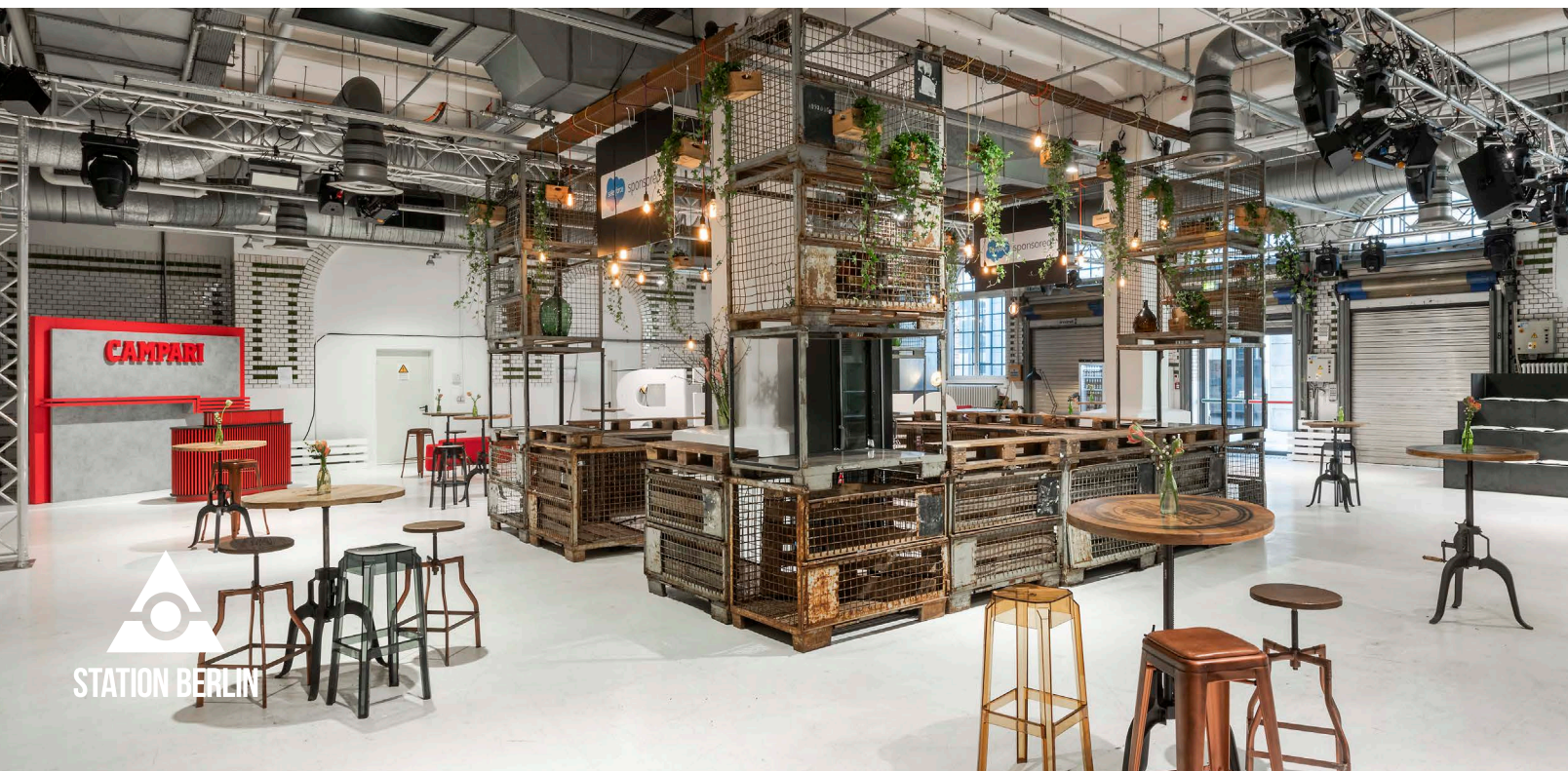
HALL 2

INFO

Parcels used to be processed for shipment inside this redbrick masonry structure featuring semi-circular arches. Today, it serves as the catering and lounge areas for aftershow parties, in conjunction with Halls 1, 3 and/or 7.

On the upper floor, there are 5 production rooms that can also be used as dressing rooms for performing artists.





HALL 2

USE

Centrally located, Hall 2 lies at the heart of the entire site and in terms of logistics, it is perfectly connected with the adjacent halls.

Frequently it serves both as an independent event space as well as a catering area.



HALL 2

FACTS

Floor space	440 sqm
Dimensions	22 x 20 m
Clearance height	5,35 m
Lamp height	3,60m
Level	Ground Floor

SEATING*

Row	340 Seats
Banquet	160 Seats
Without seating	380 Standing

OTHER

Power	Yes
Water	Yes
LAN/WiFi	Yes/Yes
Truck/car access (via ramp)	No/Yes
Heating/Cooling	Yes/No
Blackout	Optional

*Reference point. The maximum room capacity depends on the specific room concept and has always be considered individually.