

HALL 3

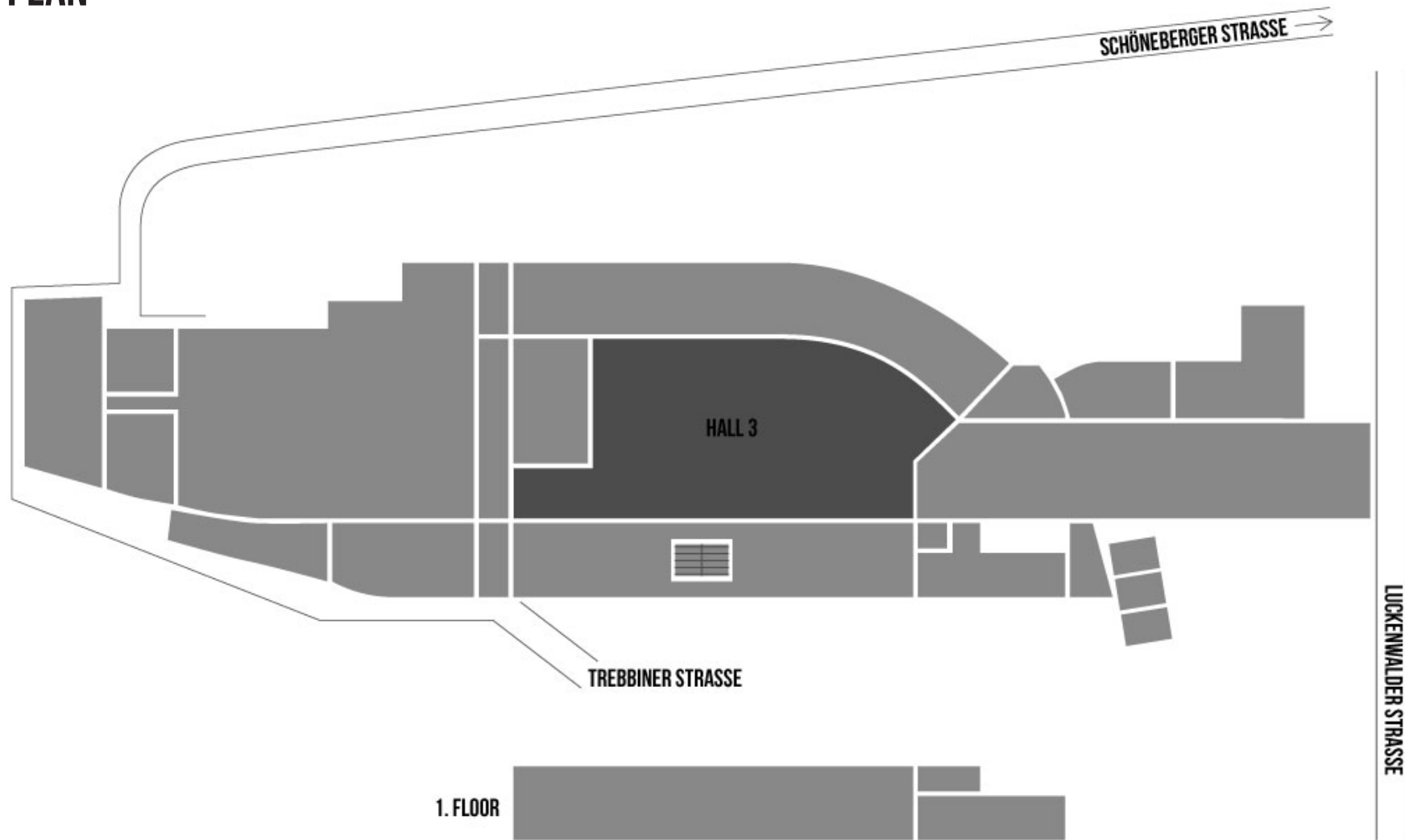
STATION-BERLIN | EIGHT HALLS, 23.000 SQUARE METRES OF SPACE. INFINITE POSSIBILITIES.

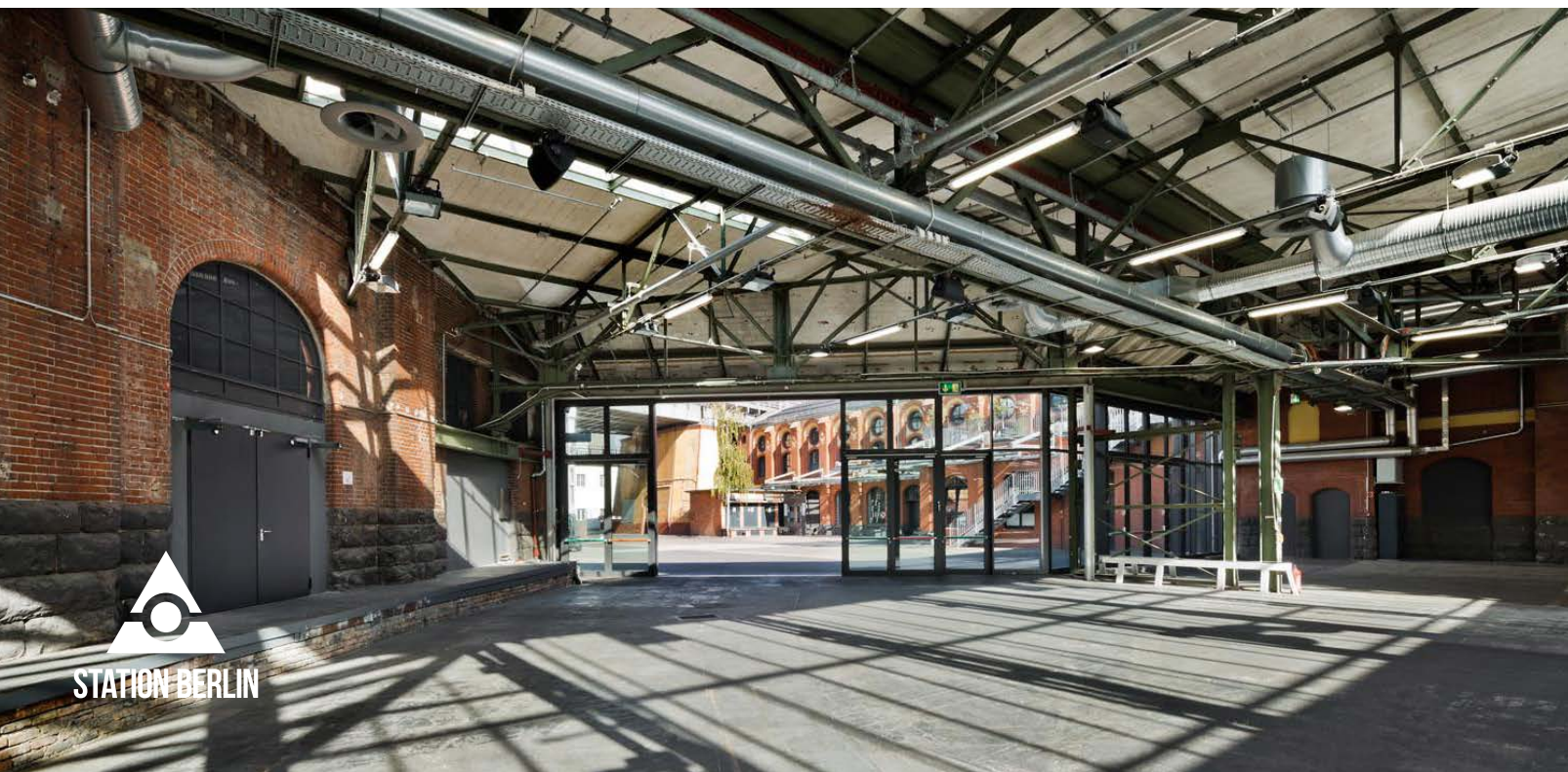


STATION BERLIN

HALL 3

GROUND PLAN



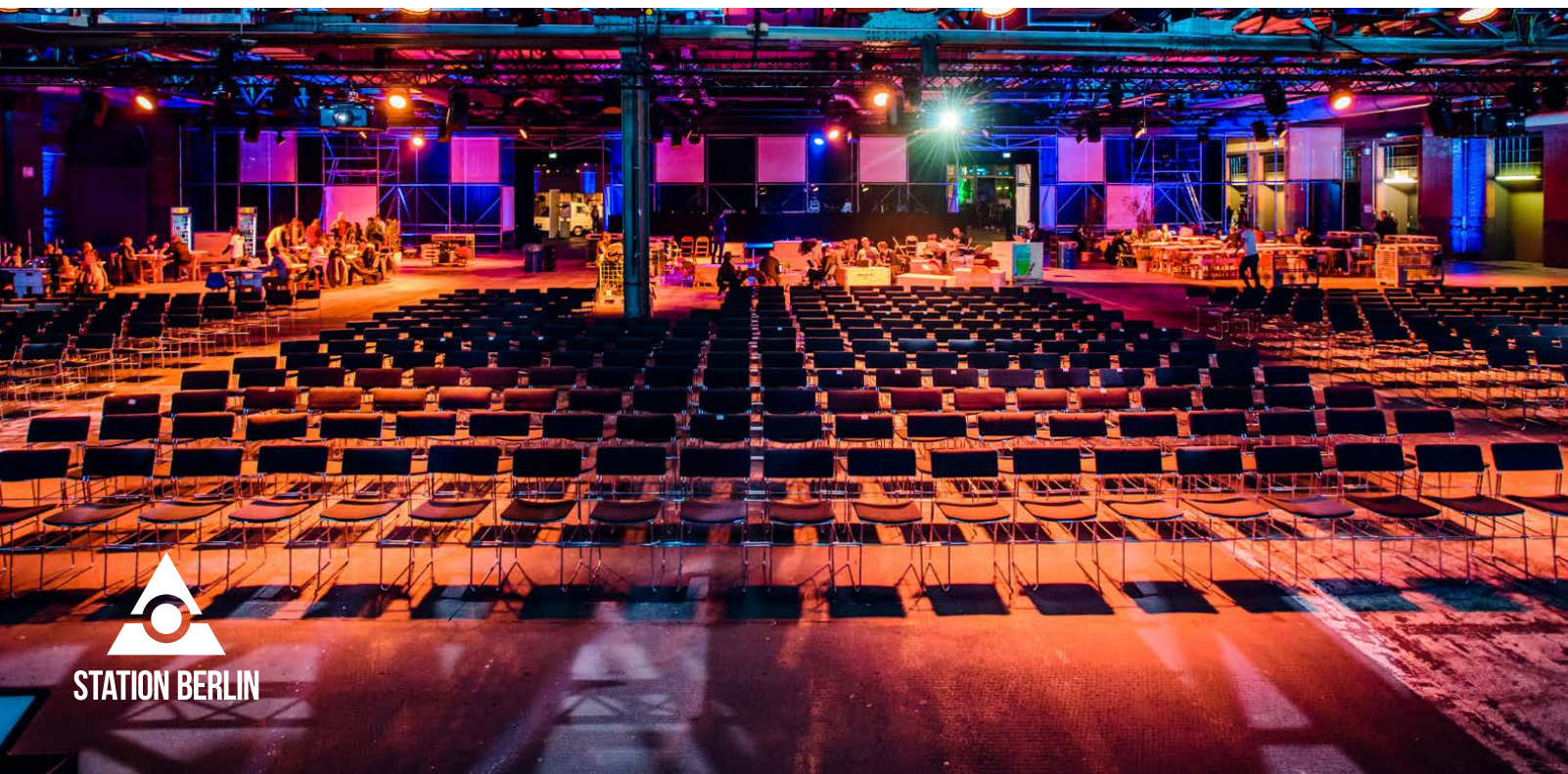


HALL 3

INFO

Hall 3 is the centerpiece of STATION-Berlin. The 4,200sqm of space in the former inner courtyard of the Postal Train Station is ideal for a variety of events.

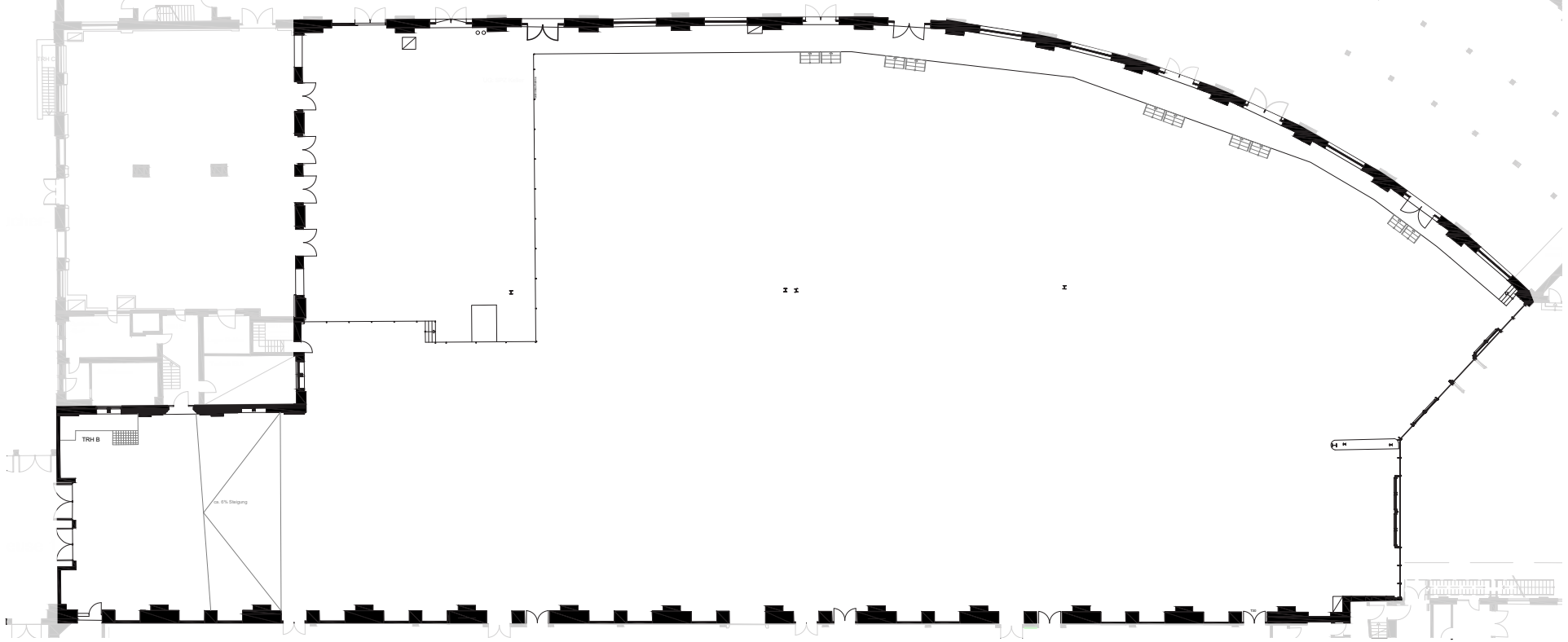
The expansive glass facade creates an enchanting atmosphere in this hall, making it an ideal spot for gala events or evening events.



HALL 3

USE

Open, bright, spacious: Hall 3 embodies these qualities perfectly. With its 4,200sqm of floor space and the expansive glass window front facing the interior courtyard – installed in 2011 – it guarantees thrilling “insights” and “outlooks”, literally and figuratively speaking. At the same time, the new HVAC system was recently installed and made operational.



HALL 3

FACTS

Floor space	4.200 sqm
Dimensions	110 x 48 m
Clearance height	10,80 m
Lamp height	5,35 m
Main beam height	4,90 m
Level	Ground Floor

SEATING*

Theatre	2.300 Seats
Banquet	1.650 Seats
Without seating	3.200 Standing

OTHER

Power	Yes
Water	Yes
LAN/WiFi	Yes/Yes
Truck/car access (via ramp)	Yes/Yes
Heating/Cooling	Yes/Yes
Blackout	Optional

*Reference point. The maximum room capacity depends on the specific room concept and has always be considered individually.