

# HALL 1

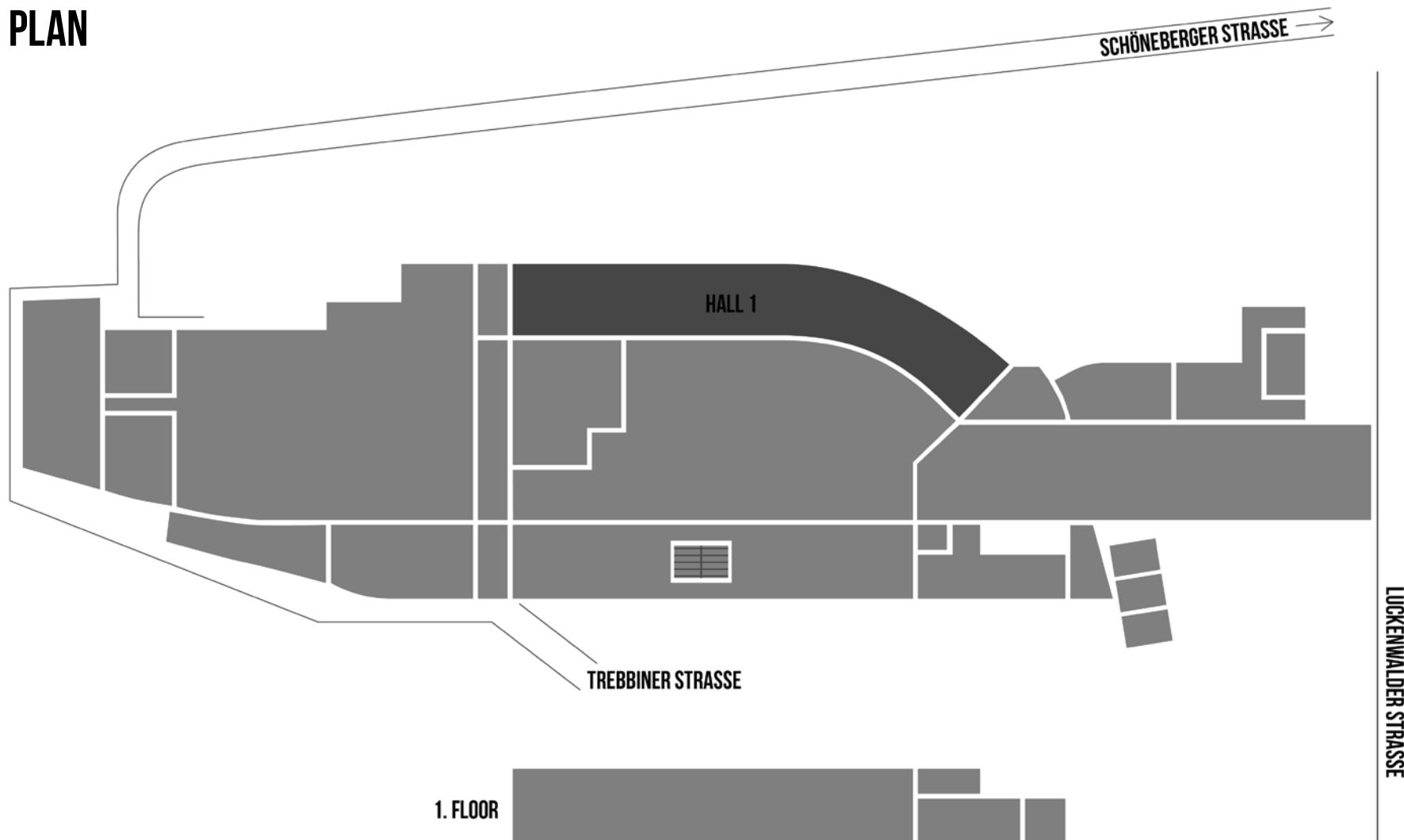
STATION BERLIN | EIGHT HALLS. 23,000 SQUARE METRES OF SPACE. INFINITE POSSIBILITIES.

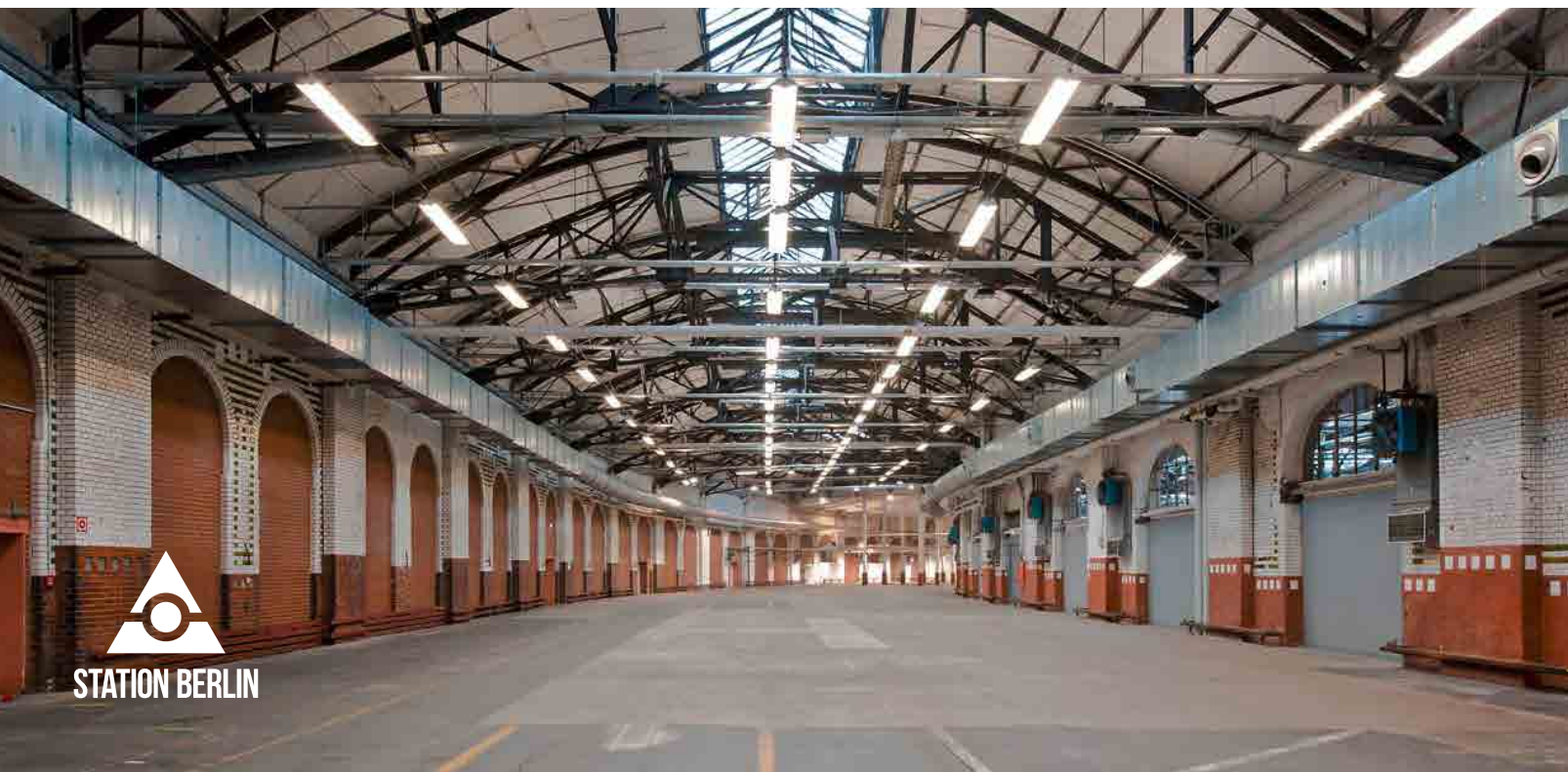


STATION BERLIN

# HALL 1

## GROUND PLAN





# HALL 1

## INFO

The former parcel distribution facility is considered the location's hallmark site.

Because of its elongated shape (with a slight bend), it is also affectionately referred to as the "Banana Hall".



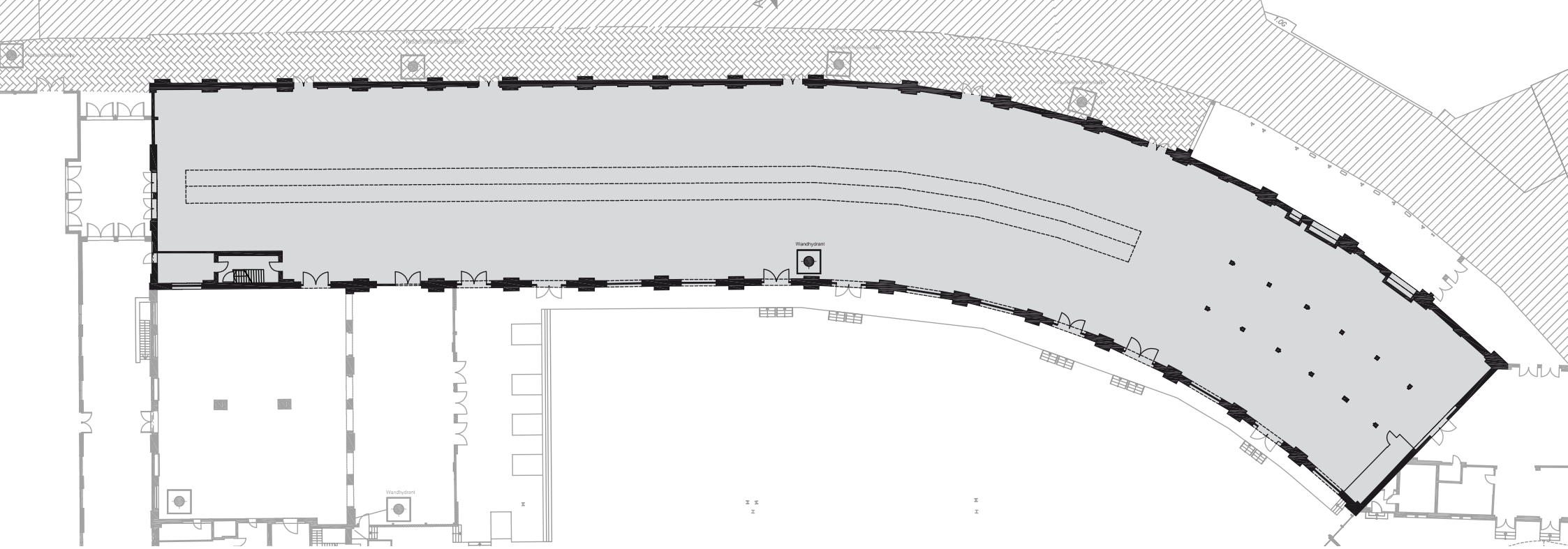


# HALL 1

## USE

An elongated structure with a slight curve in the forward quarter; we affectionately refer to Hall 1 as "Banana Hall".

It offers some surprising perspectives, can be conveniently subdivided and is sufficiently high enough to realize multi-story installations. In 2011, a new ventilation system was installed.



# HALL 1

## FACTS

Floor space	2,700m <sup>2</sup>
Dimensions	135 x 20m
Clearance height	13m
Crossbeam height	7.70m
Level	Ground Floor

## SEATING

Theatre	1,200 Seats
Gala	800 Seats
Banquet	1,000 Seats
Without seating	2,700 Standing

## OTHER

Power	Yes
Water	Yes
LAN/WiFi	Yes/Yes
Truck/car access (via ramp)	No/Yes
Heating/Air Conditioning	Yes/No
Blackout	Optional