

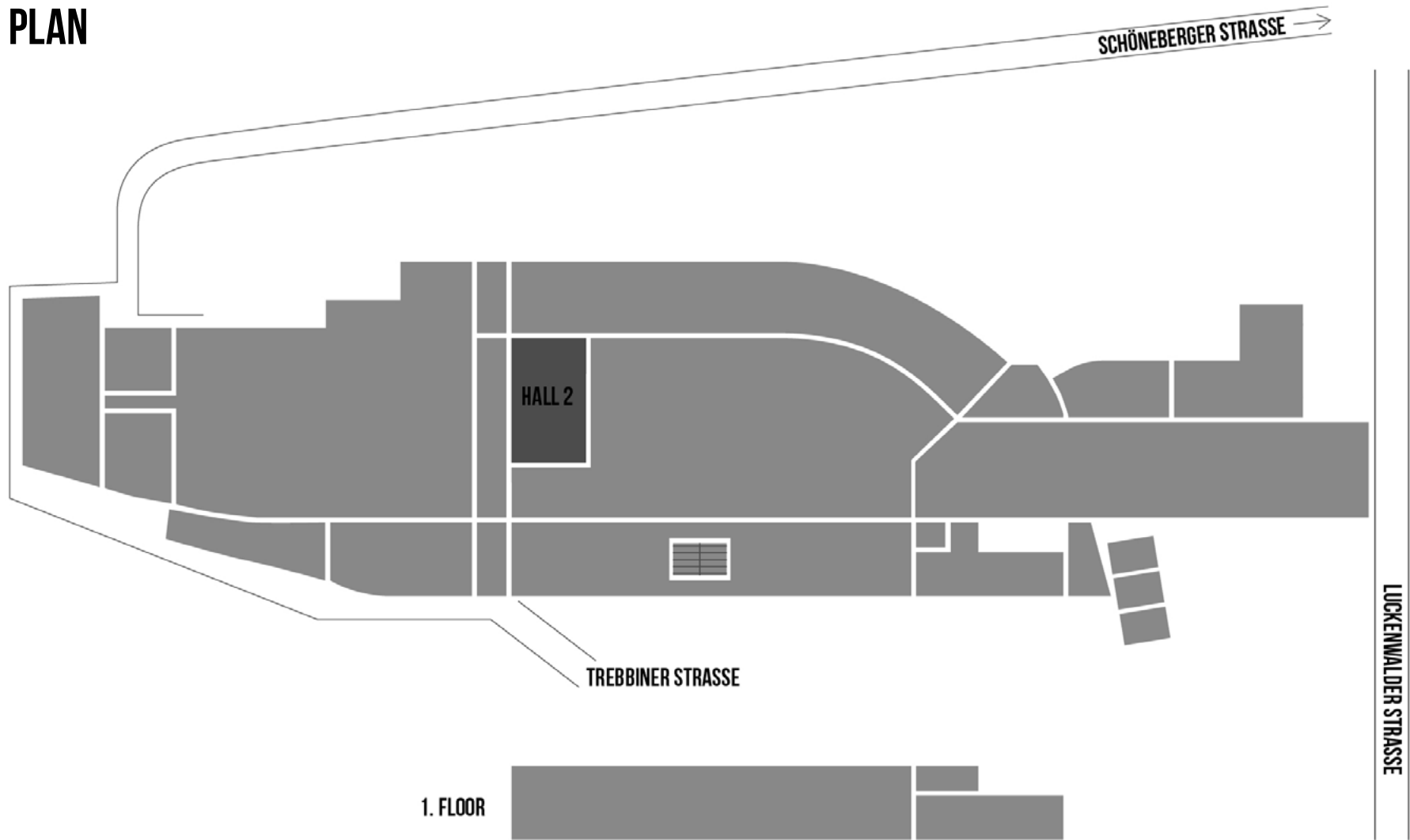
HALL 2

STATION BERLIN | EIGHT HALLS. 23,000 SQUARE METRES OF SPACE. INFINITE POSSIBILITIES.



HALL 2

GROUND PLAN





HALL 2

INFO

Parcels used to be processed for shipment inside this redbrick masonry structure featuring semi-circular arches. Today, it serves as the catering and lounge areas for aftershow parties, in conjunction with Halls 1, 3 and/or 7.

On the upper floor, there are five production rooms that can also be used as dressing rooms for performing artists.



HALL 2

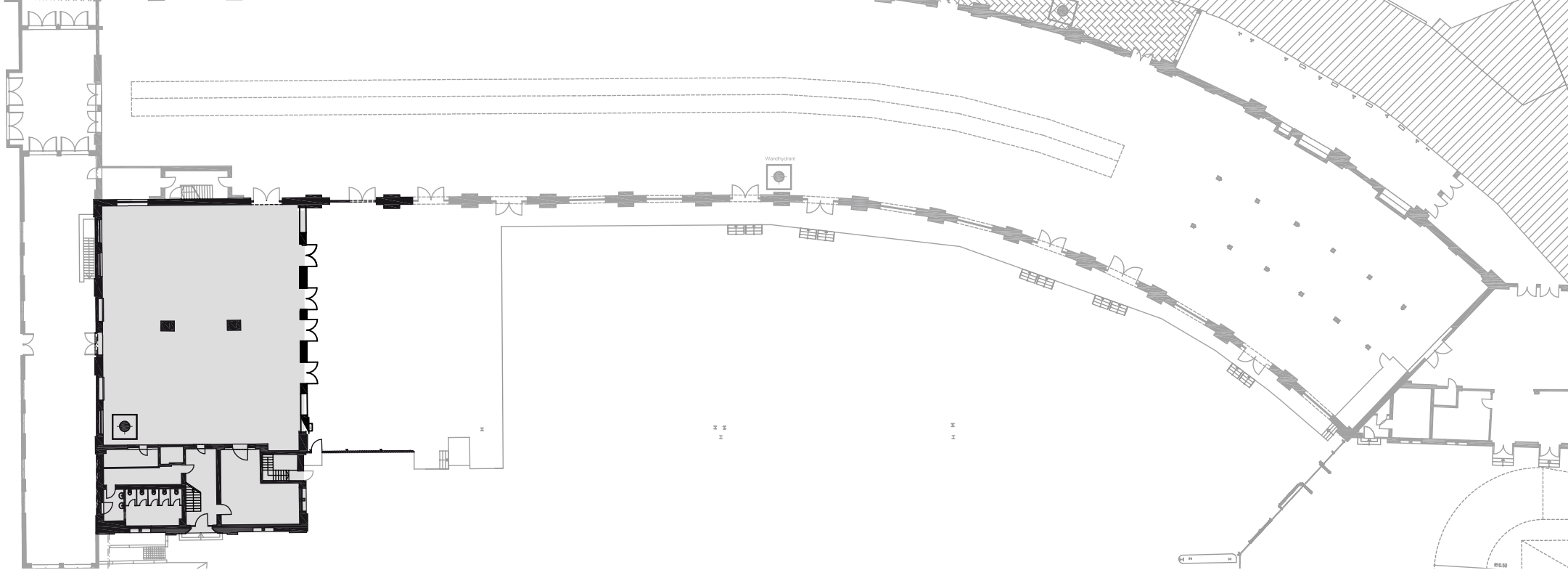
USE

Hall 2 is located at the heart of the entire location and is, in terms of logistics perfectly connected with the adjacent halls.

The hall can either be used as an independent event space or as the catering back area for other halls.



STATION BERLIN



HALL 2

FACTS

Floor space	440 m ²
Dimensions	18 x 23 m
Clearance height	5.80 m
Lamp height	3.60 m
Level	Ground level

SEATING

Theatre	360 seats
Gala	140 seats
Banquet	190 seats

OTHERS

Power	yes
Water	yes
LAN/WiFi	yes/yes
Negotiable by truck/car	no/yes
Heating/Ventilation	yes/no
Blackout	optional