

HALL 3

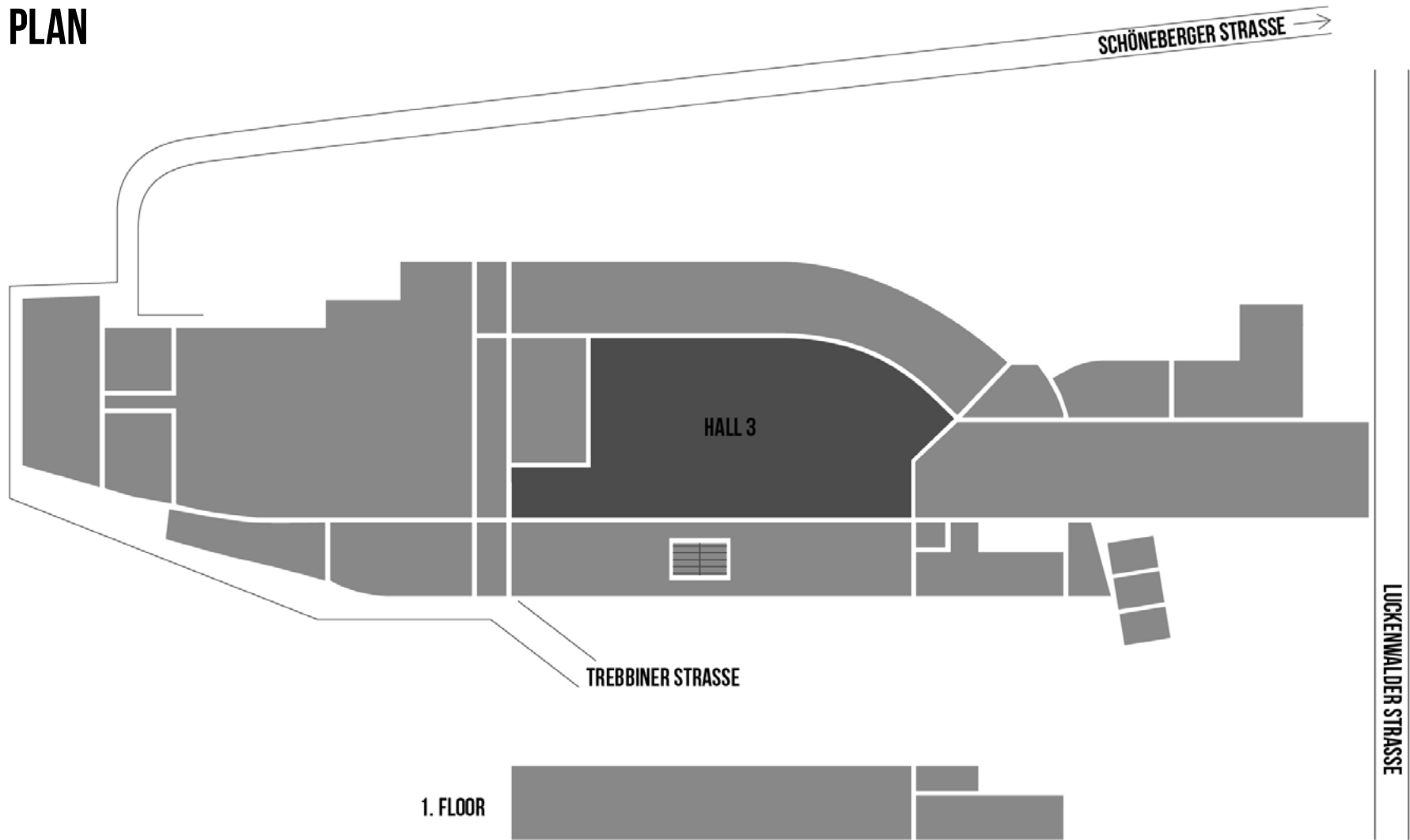
STATION BERLIN | EIGHT HALLS. 23,000 SQUARE METRES OF SPACE. INFINITE POSSIBILITIES.



STATION BERLIN

HALL 3

GROUND PLAN



1. FLOOR

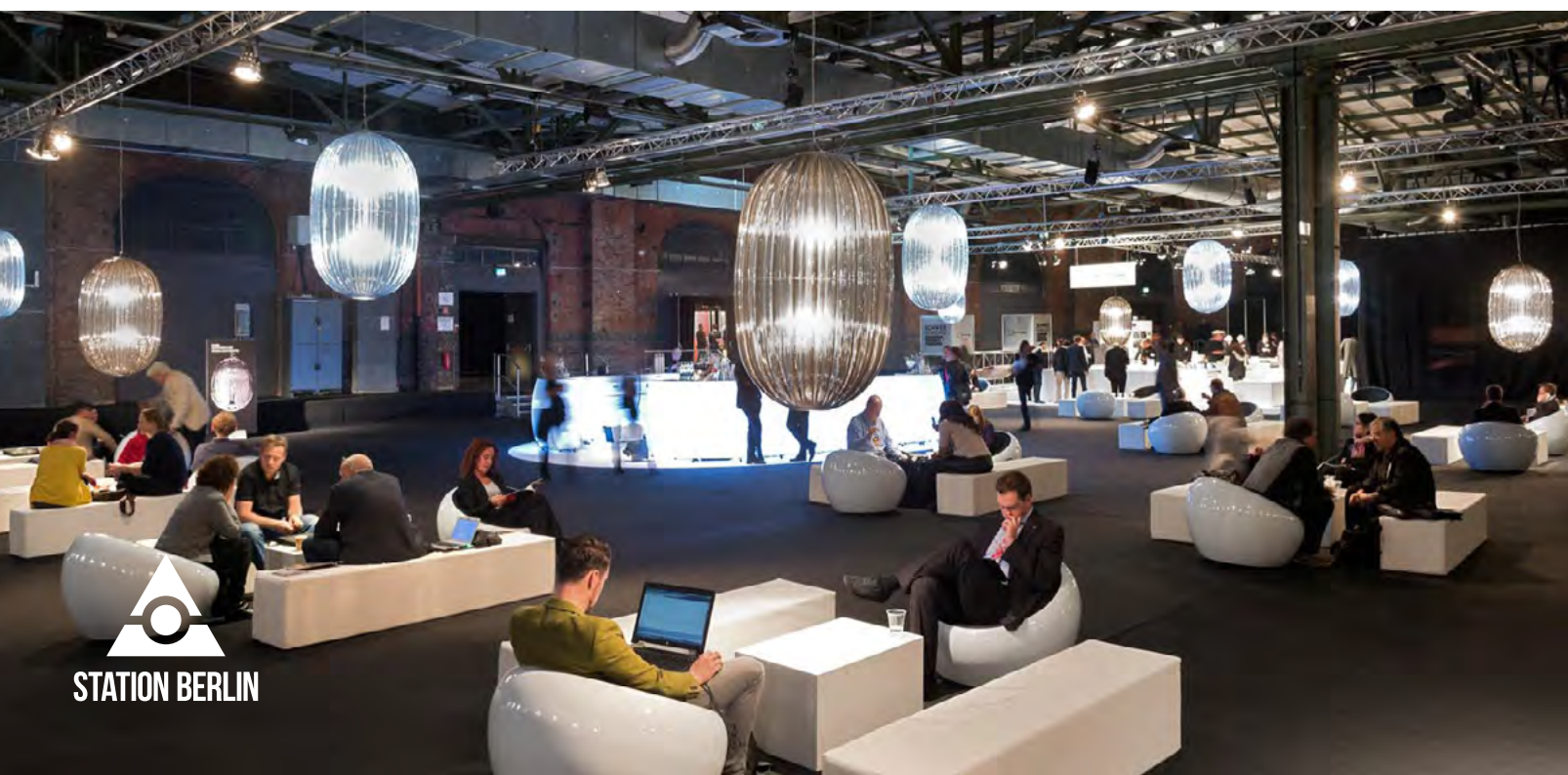


HALL 3

INFO

Hall 3 is the centerpiece of STATION-Berlin. The 4,400 m² of space in the former inner courtyard of the postal train station is ideal for a variety of events.

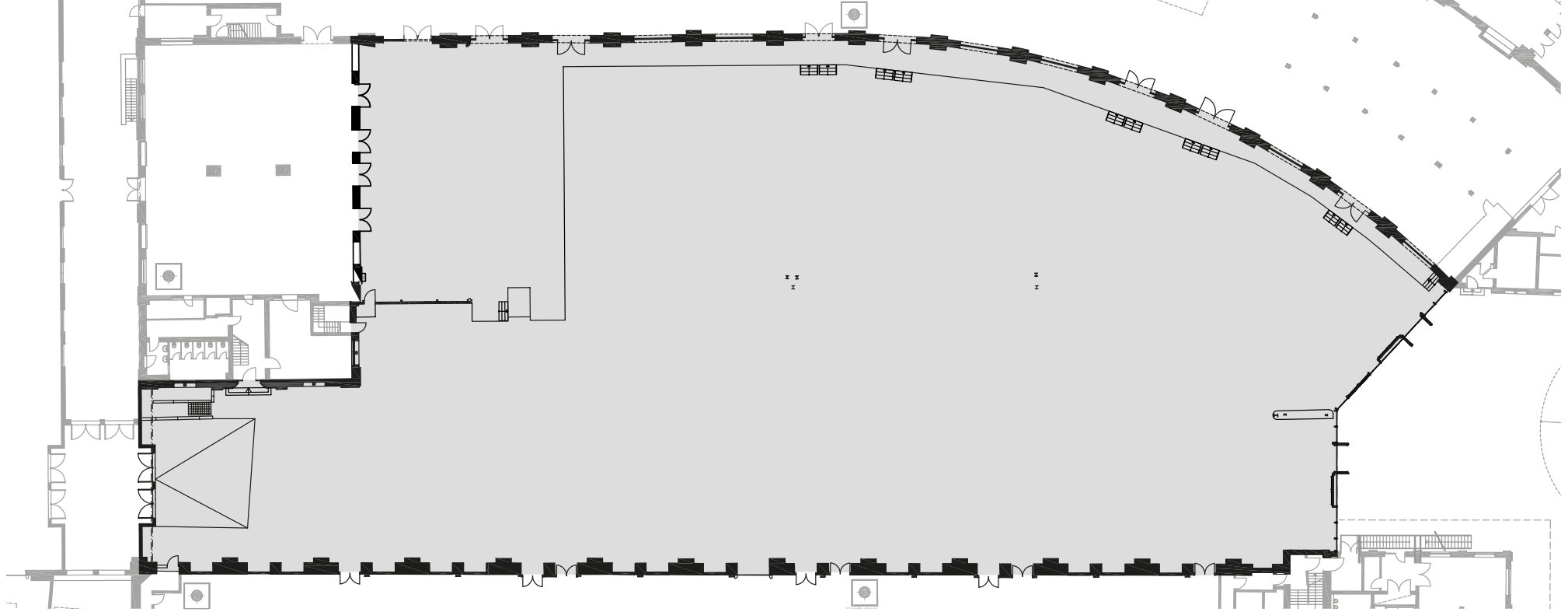
The expansive glass facade creates an enchanting atmosphere in this hall, making it an ideal spot for gala events or evening events.



HALL 3

USE

Open, bright, spacious: Hall 3 embodies these qualities perfectly. With its 4,400 m² of floor space and the expansive glass window front facing the interior courtyard it guarantees thrilling “insights” and “outlooks”, literally and figuratively speaking.



HALL 3

FACTS

| | |
|------------------|----------------------|
| Floor space | 4,400 m ² |
| Dimensions | 110 x 48 m |
| Clearance height | 10.80 m |
| Lamp height | 5.35 m |
| Level | Ground level |

SEATING

| | |
|---------|-------------|
| Theatre | 2,300 seats |
| Gala | 1,700 seats |
| Banquet | 2,000 seats |

OTHERS

| | |
|-------------------------|----------|
| Power | yes |
| Water | yes |
| LAN/WiFi | yes/yes |
| Negotiable by truck/car | yes/yes |
| Heating/Ventilation | yes/yes |
| Blackout | optional |