

HALL 4

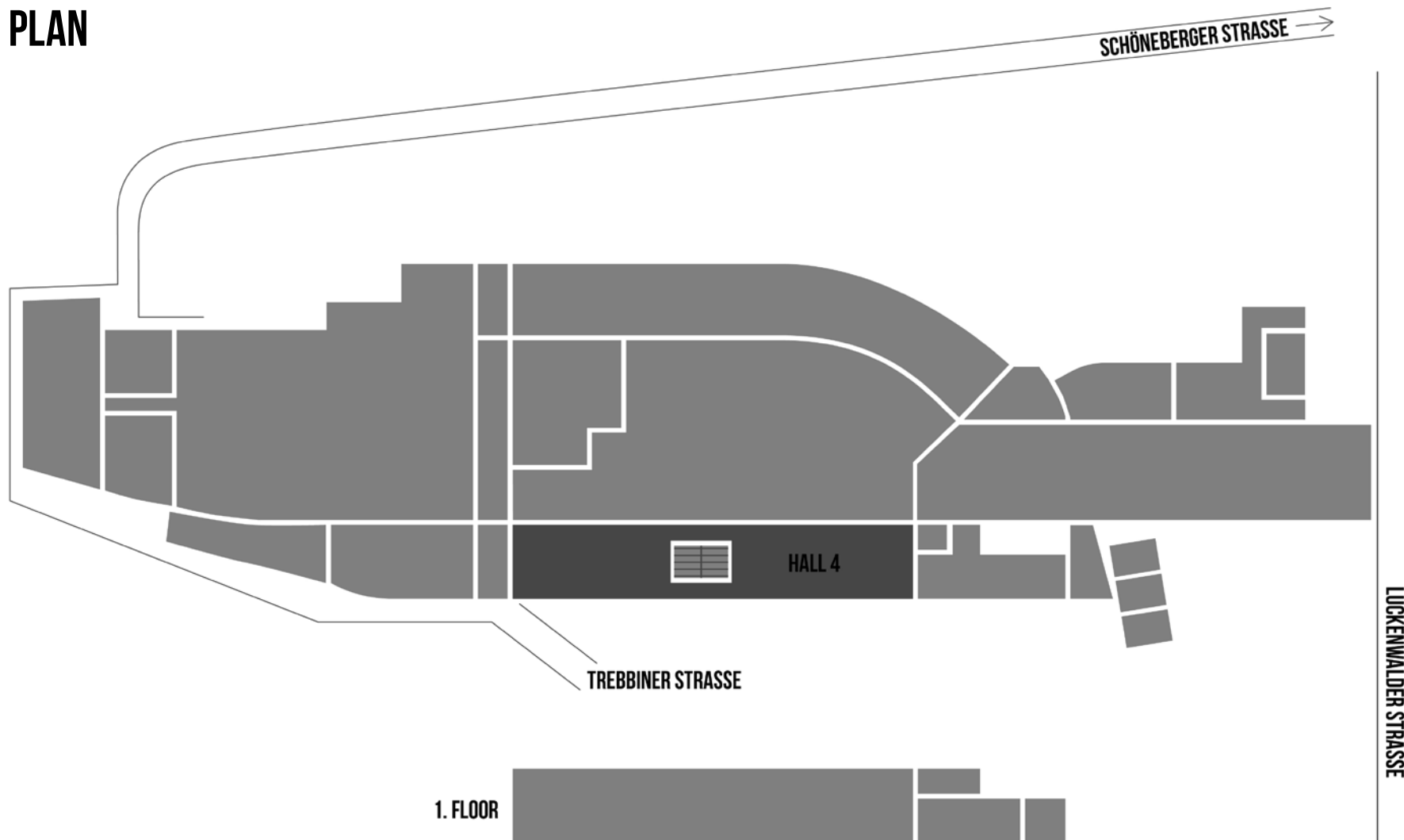
STATION BERLIN | EIGHT HALLS. 23,000 SQUARE METRES OF SPACE. INFINITE POSSIBILITIES.

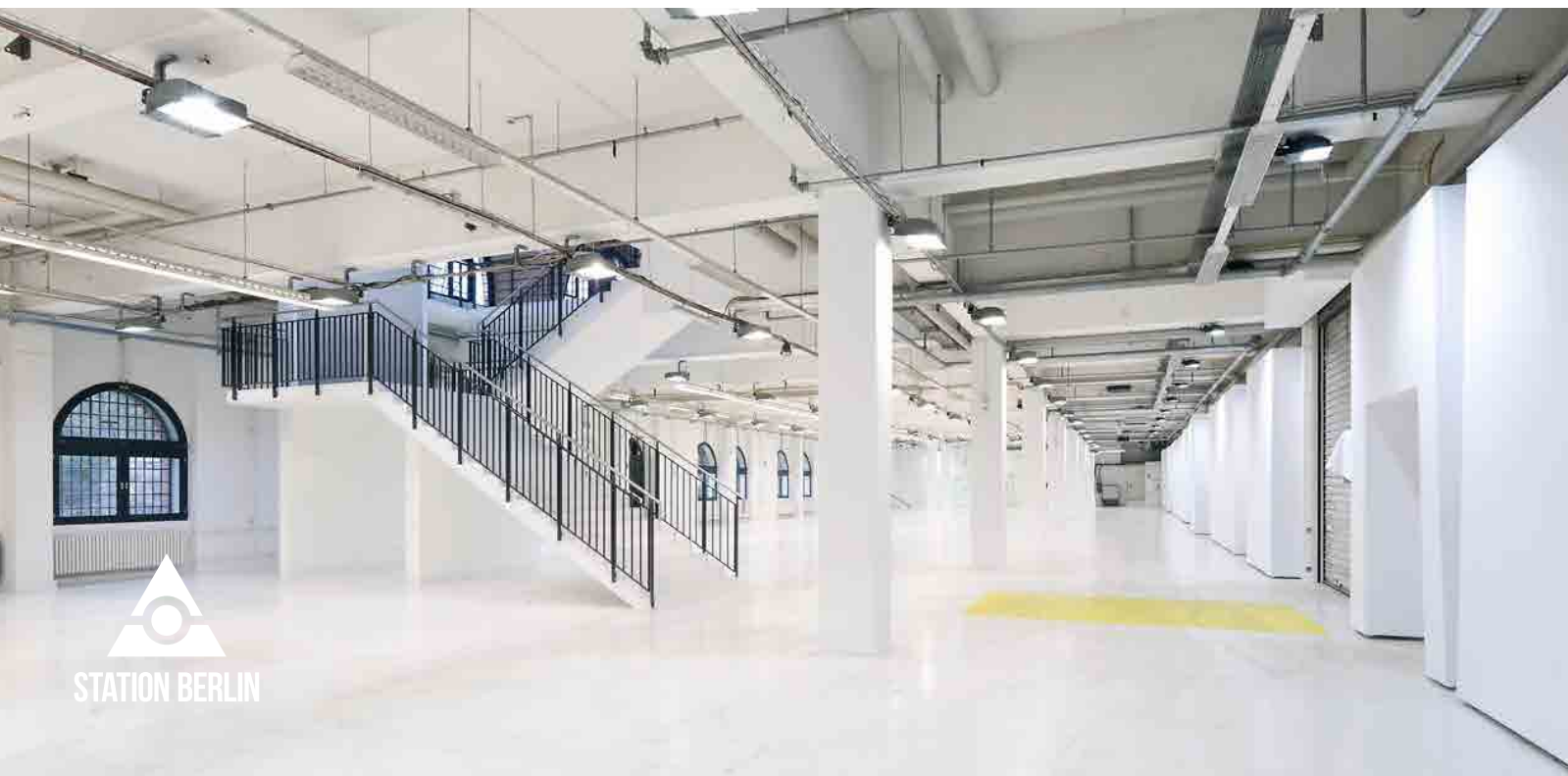


STATION BERLIN

HALL 4

GROUND PLAN





HALL 4

INFO

This hall embodies the principles of minimalism and simplicity.

Whether used individually or as part of a combination, this hall is perfectly suited for conventions, meetings, seminars, workshops, receptions, trade shows and exhibitions.

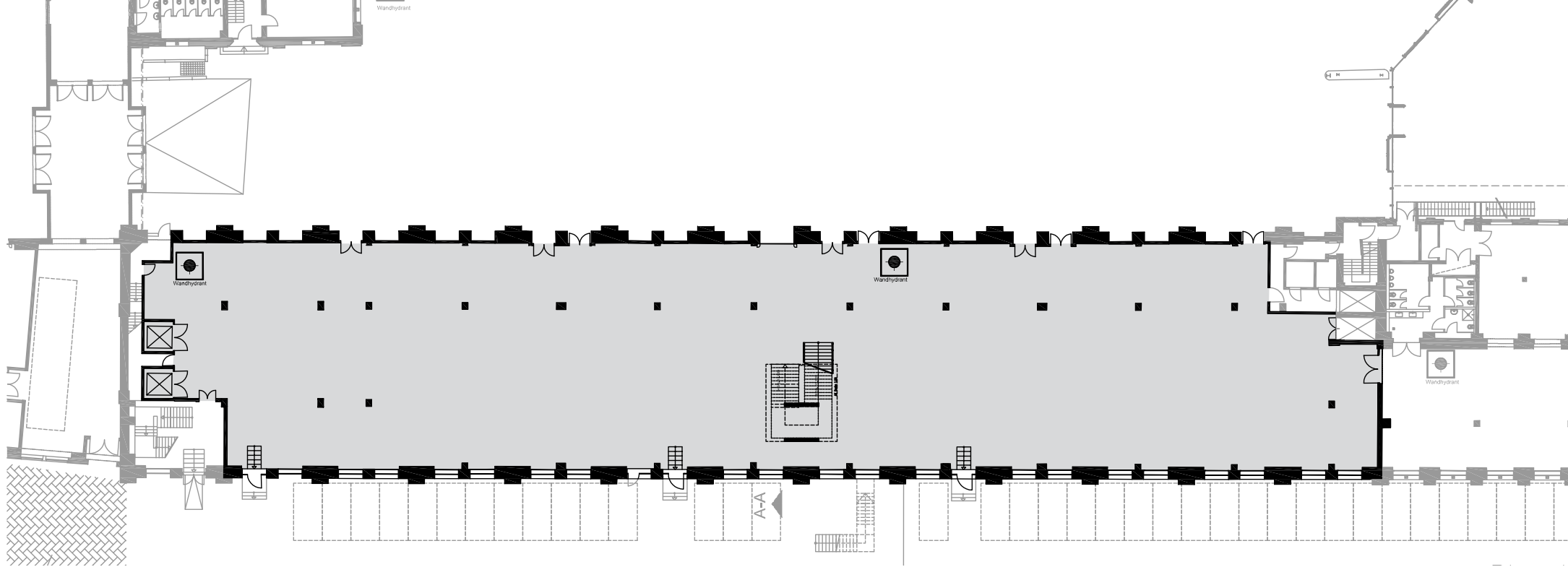


HALL 4

USE

“The White Hall”—with only a little effort, Hall 4 can exude any kind of lighting atmosphere you desire.

At its centre is a majestic staircase that leads upstairs to Hall 5.



HALL 4

FACTS

Floor space	2,100m ²
Dimensions	105 x 20m
Clearance height	4.20m
Lamp height	3.75m
Level	Ground Floor

SEATING

Theatre	1,000 Seats
Gala	600 Seats
Banquet	800 Seats
Without seating	2,1000 Standing

OTHER

Power	Yes
Water	Yes
LAN/WiFi	Yes/Yes
Truck/car access (via ramp)	No/Yes
Heating/Air Conditioning	Yes/No
Blackout	Optional