

SYMPOSIUM

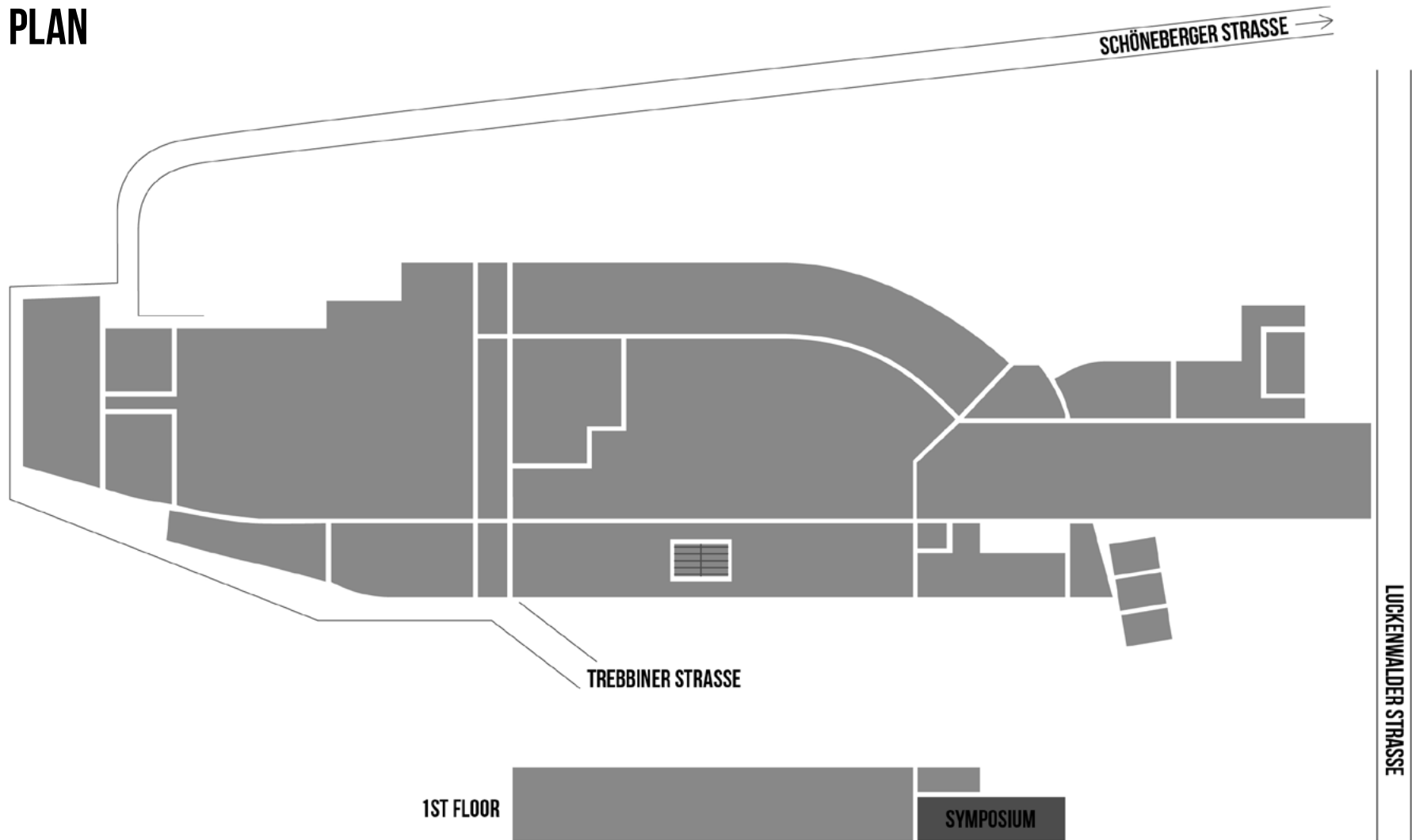
STATION BERLIN | EIGHT HALLS. 23,000 SQUARE METRES OF SPACE. INFINITE POSSIBILITIES.

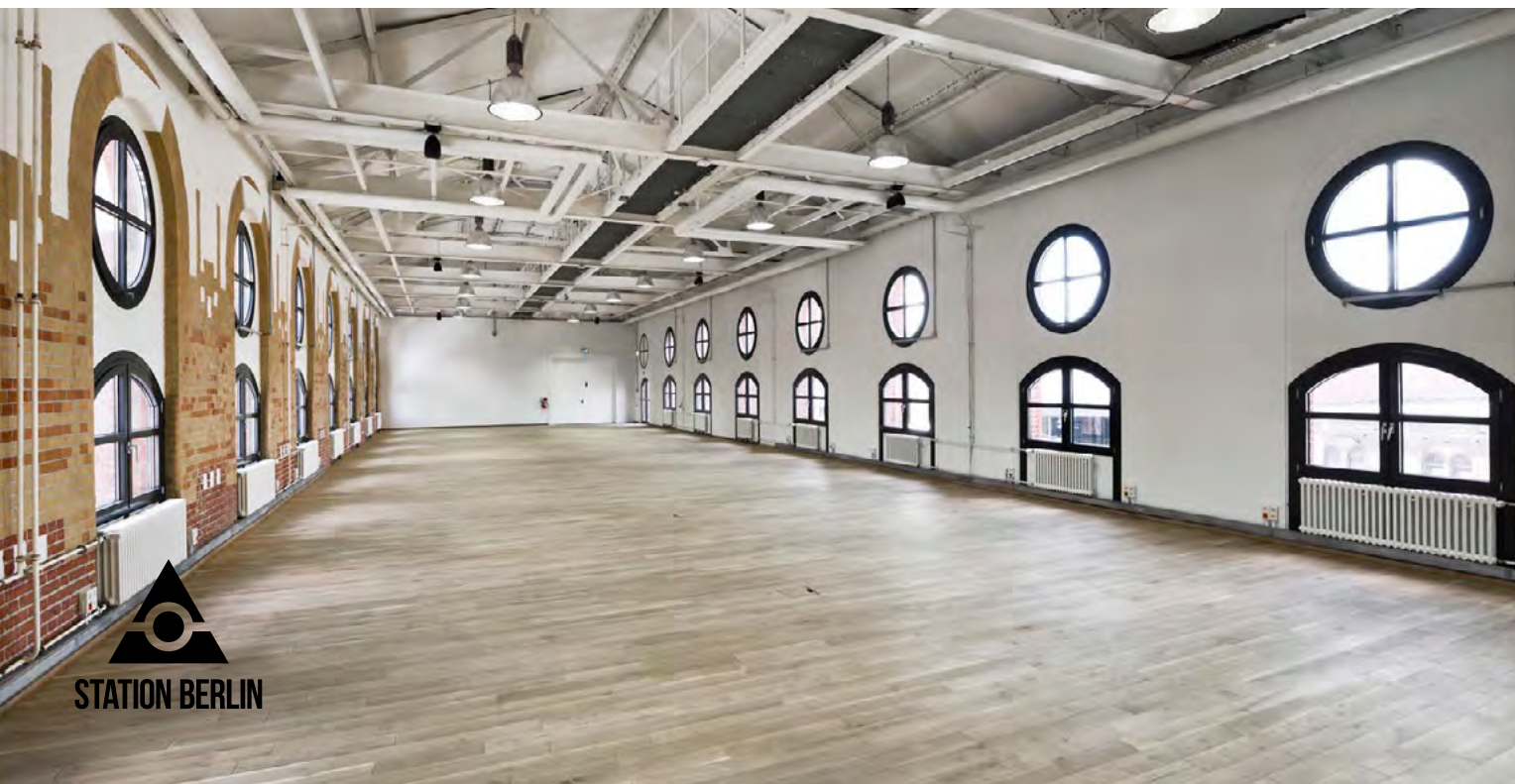


STATION BERLIN

SYMPOSIUM

GROUND PLAN





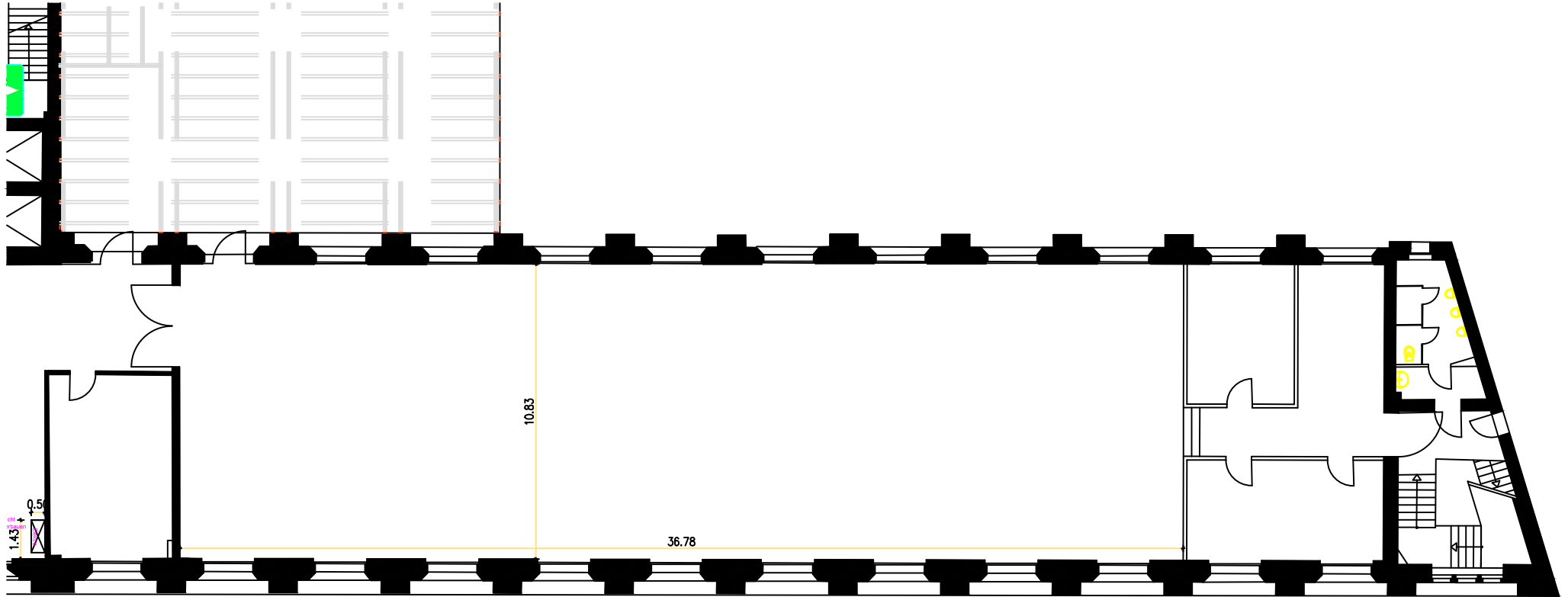
SYMPOSIUM

INFO

The Symposium is directly connected to Hall 5; it offers 400 m² of space and a rooftop terrace that can be custom configured with furnishings and equipment.

The Symposium is perfect for conferences and formal management board meetings.

High ceilings, oiled parquet floors and large windows: The Symposium offers a cordial framework for dinners, press conferences, workshops and much more.



SYMPOSIUM

FACTS

Floor space	400 m ²
Dimensions	36.7 x 10.9 m
Clearance height	7.70 m
Floor	Ground level

SEATING

Theater	400 seats
Gala	200 seats
Banquet	200 seats
Without seating	400 standing

OTHERS

Power	possible
Water	yes
LAN/WiFi	yes/yes
Negotiable by truck/car	no/no
Heating/Ventilation	yes/no
Blackout	optional